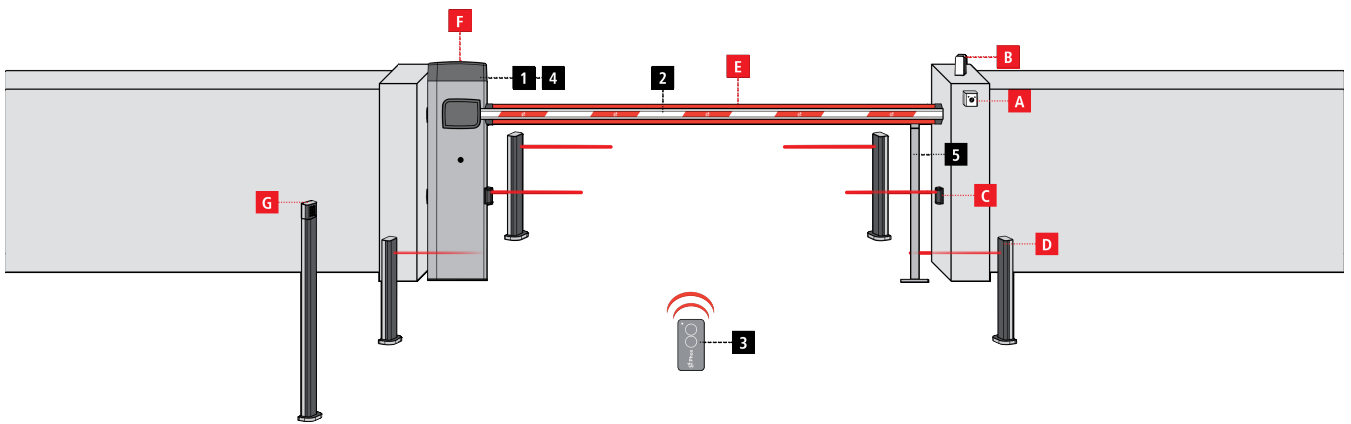


# MOTORS FOR **BARRIERS**



# EXAMPLE SYSTEM MOTORS FOR BARRIERS

98|101



## COMPONENTS

- 1** Motor
- 2** Boom
- 3** Transmitter
- 4** Receiving module
- 5** End support post

## ADDITIONAL ACCESSORIES

- A** Key switch
- B** Flashing light
- C** Photocells
- D** Pillar photocells
- E** Lights kit (boom)
- F** Lights kit (barrier)
- G** Pillar-mounted digital radio switch

## CABLE TO BE USED

LENGTH OF THE CABLE	< 10 metres	from 10 to 20 metres	from 20 to 30 metres
Power supply (230V)	3G x 1.5 mm <sup>2</sup>	3G x 1.5 mm <sup>2</sup>	3G x 2.5 mm <sup>2</sup>
Photocells (TX)	2 x 0.5 mm <sup>2</sup>	2 x 0.5 mm <sup>2</sup>	2 x 0.5 mm <sup>2</sup>
Photocells (RX)	4 x 0.5 mm <sup>2</sup>	4 x 0.5 mm <sup>2</sup>	4 x 0.5 mm <sup>2</sup>
Key switch	2 x 0.5 mm <sup>2</sup>	2 x 0.5 mm <sup>2</sup>	2 x 0.5 mm <sup>2</sup>
Flashing light	2 x 1.5 mm <sup>2</sup>	2 x 1.5 mm <sup>2</sup>	2 x 1.5 mm <sup>2</sup>

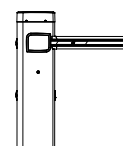
# INDEX OF PRODUCTS MOTORS FOR BARRIERS



**Motors for BARRIERS**

98|99

**niuba**



**Accessories**

100

**accessories for 4m barriers**

100

**accessories for 6m barriers**

101

**common accessories**



# niuba

## Rapid opening automatic raise arm barrier

for residential and multiple use installations **up to 6 m width**

Available in two versions:  
**24V** and **230V**



### PLUS

- Accurate and safe operation with encoder
- Obstacle detection
- Self-learning of opening and closing times
- Synchronized operation of two barriers using the SYNCRO module
- Balancing spring included
- Anodized aluminium boom (accessory)

#### 24V versions:

- Programmable acceleration and deceleration
- Operation in case of absence of power using the B-PACK backup battery
- Operation with solar power using the ECO-LOGIC system

## TECHNICAL FEATURES

Description	24V for booms up to 4 m	24V for booms up to 6 m	230V for booms up to 4 m	230V for booms up to 6 m
<b>MODEL</b>	<b>NIUBA4-24V</b>	<b>NIUBA6-24V</b>	<b>NIUBA4-230V</b>	<b>NIUBA6-230V</b>
<b>CODE</b>	<b>36A022</b>	<b>36A023</b>	<b>36A024</b>	<b>36A025</b>
Power supply (Vac - Hz)	230 - 50	230 - 50	230 - 50	230 - 50
Motor power supply (Vac - Hz)	24 Vdc	24 Vdc	230 - 50	230 - 50
Maximum electric power (W)	240	300	300	350
Opening time (s)	3 ÷ 4	5 ÷ 6	6	8
Working temperature (°C)	-20 ÷ +55	-20 ÷ +55	-20 ÷ +55	-20 ÷ +55
Duty cycle % - (max. cycles/hour)	80 - (200)	80 - (150)	30 - (90)	30 - (90)
Protection degree (IP)	44	44	44	44
Motor weight (Kg)	44	52	44	52

**CONTROL UNIT**



- Programming achieved using 3 buttons and display
- Plug-in adaptor for modular radio receiver MR2
- Input for photocells with self-test function
- Input for mechanical safety edges
- Courtesy light output
- Self-learning of the limit switch points and obstacle detection function
- Operational cycle counter, with programmable maintenance reminders
- Slow-down in the limit switch area
- Monitoring of input status using the display
- ADI connector for connecting CL1+, SYNCRO and BT01 optional modules

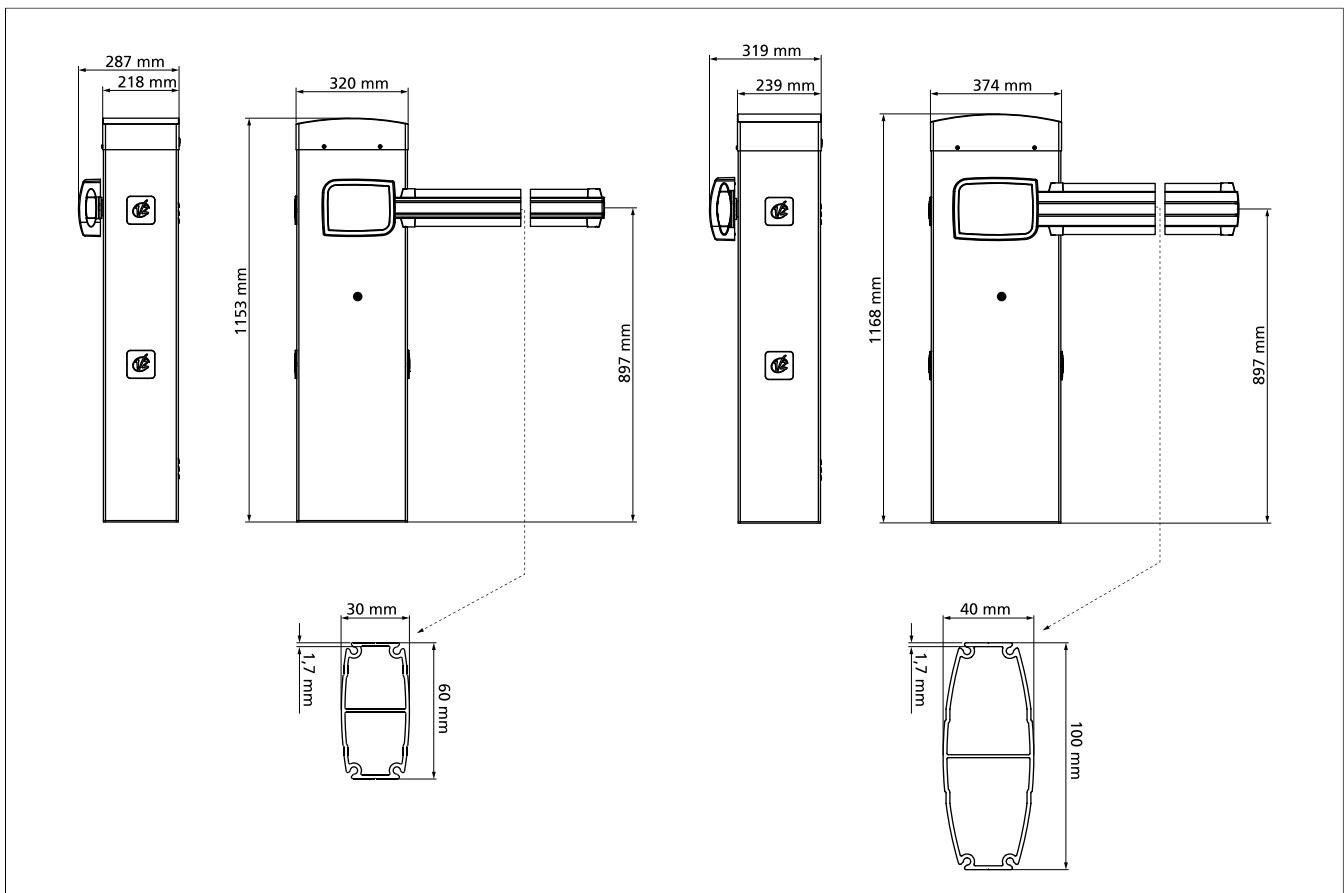
**24V versions**

- Holding magnet output
- 24V flashing light output
- Energy Saving function to minimise consumption in stand-by mode

**230V versions**

- Output for flashing light 230V with intermittence

 Electrical connections of the control unit on page 128



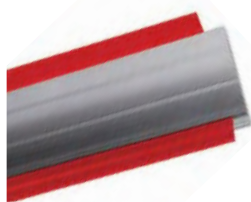


## ACCESSORIES FOR 4 m BARRIERS



**163614**

4.22 m square aluminium boom



**163628**

4.22 m square aluminium boom with pre-assembled protective rubber



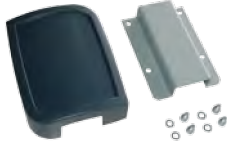
**163617**

4.22 m round (Ø 60) aluminium boom



**163619**

Fixing kit for Ø 60 round boom



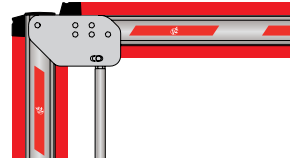
**173630**

Fixing kit for square boom



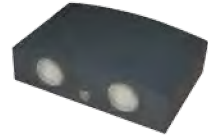
**173608**

Anchor plate



**163616**

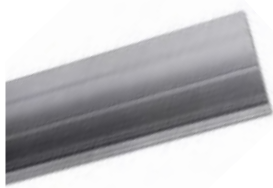
Joint for square boom



**163630**

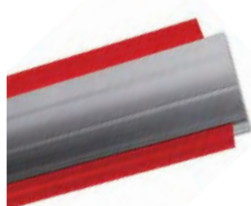
Cover with integrated flashing light

## ACCESSORIES FOR 6 m BARRIERS



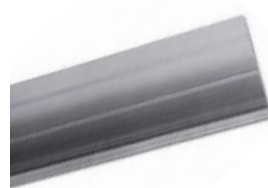
**163613**

6.28 m square aluminium boom



**163627**

6.28 m square aluminium boom with pre-assembled protective rubber



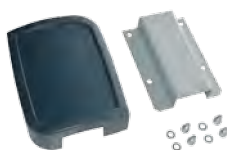
**163632**

6.28 m square aluminium boom divided into 2 sections with connecting elements



**163623**

6.28 m round (Ø 90) aluminium boom



**173629**

Fixing kit for square boom



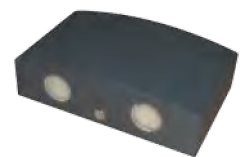
**163610**

Fixing kit for Ø 90 round boom



**173621**

Anchor plate



**163631**

Cover with integrated flashing light

## COMMON ACCESSORIES



<b>163629</b>	<b>163618</b>	<b>163604</b>	<b>163605</b>
Protective rubber kit (6m x 2)	Aluminium shelf (2 m)	Movable end support post	End support post



<b>163622</b>	<b>163615</b>	<b>161212 ▪ B-PACK</b>
Reflective adhesive strips (24 pieces)	Lights kit consisting of 6 modules and wirings	Backup battery with built-in charger



<b>11B047 ▪ MR2</b>	<b>161213 ▪ CL1+</b>	<b>161221 ▪ BT01</b>
433.92 MHz plug-in receiver module Also available in 868.30 MHz version (code 11B048)	ADI module to block and copy the programming of the control unit	ADI module for managing the control unit via Bluetooth and <b>V2app</b>