

Dock Roller



Always Supplying Advanced Flexible Excellence



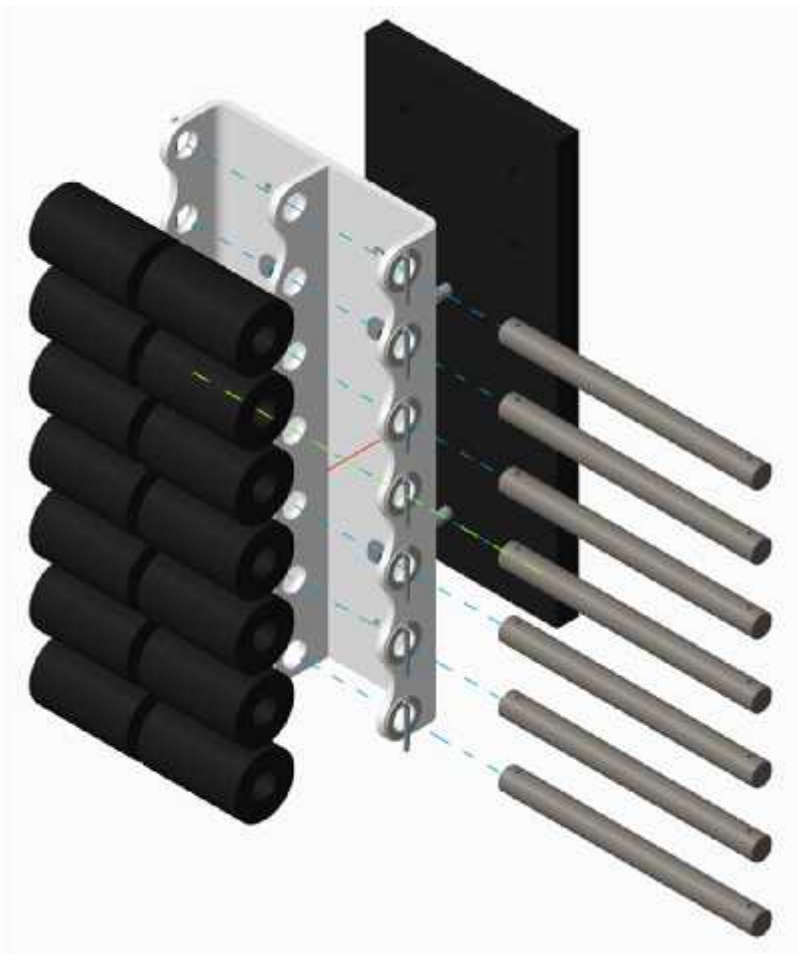
-
-
-
-
-
-

4 No. - 12mm

()

S-02-01-0002

(V4)



A-02-01-0001



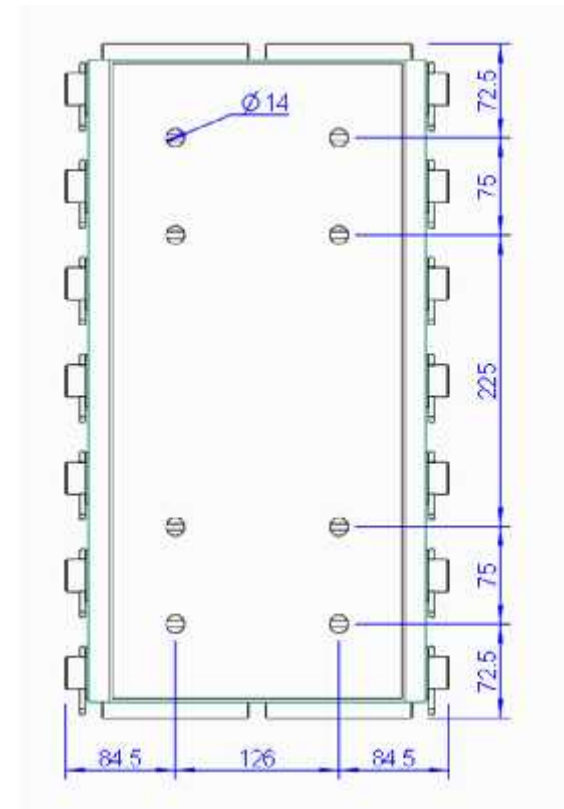
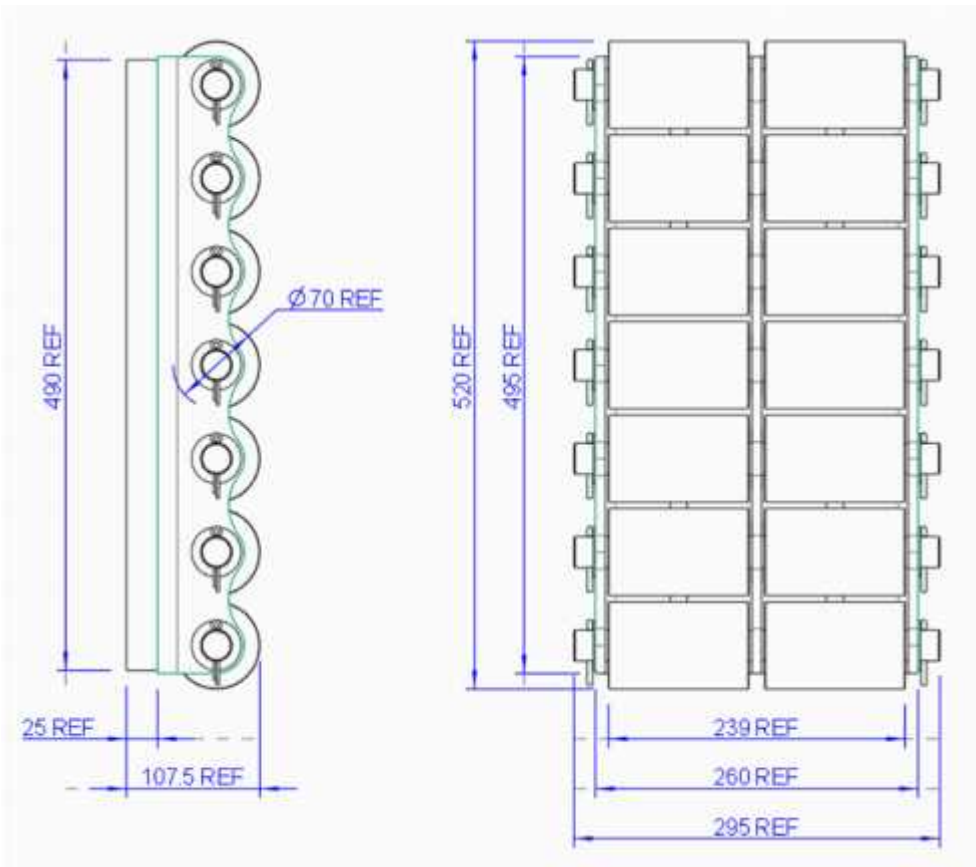
За заваряване на продукта, където не е възможно закрепянето му с болтове.

Slider Plates - Part code & details



S-02-01-0002

Dock Roller (V4), 7 Roller - Galv





4 - 12mm

Стандартен болт

B-02-01-09 12mm Hex Head Through Bolt, Z/P

Доставят се заедно с продукта

Fixing	18mm	0.7 in
Pull out Capacity	11.2 kN***	8260.7 ft.lb***
Shear Load Capacity	18.9 kN	13939.9 ft.lb***
No. Per Plate	4	4
Minimum Slab Depth	120 mm	4.7 in
Minimum Slab edge distance	900 mm	3.5 in
installation Torque	22.5 Nm	16.6 ft.lb
Bolt Spacing	N/A	N/A
Upgrade available	Stainless Steel, Chemical, Galvanised	
Material / coating	Galvanised zinc	
*** safety factor	1.4	

